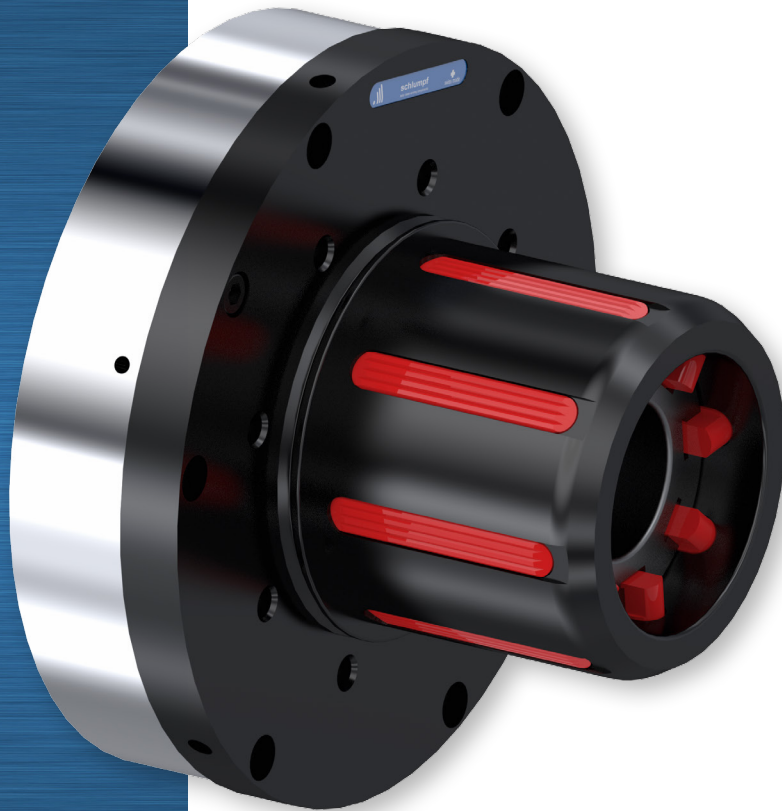


Technical information

# SDE Core Chucks



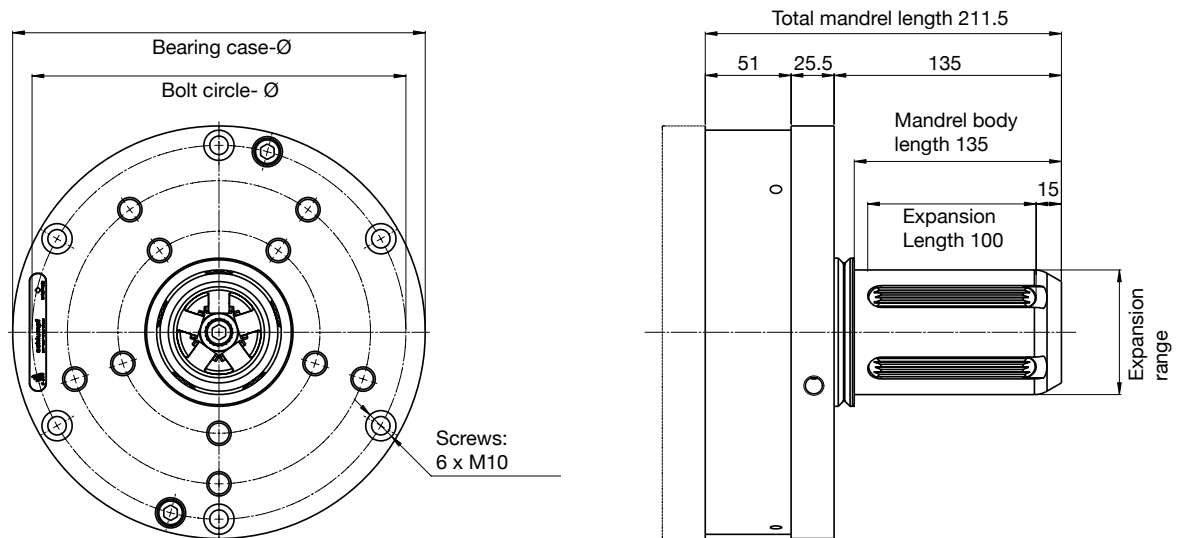
*Easy-Service-Concept*  
Service on the machine  
within 5 minutes

Quick changeover times  
other core diameters  
with plug-on adapters

# SDE Core Chucks

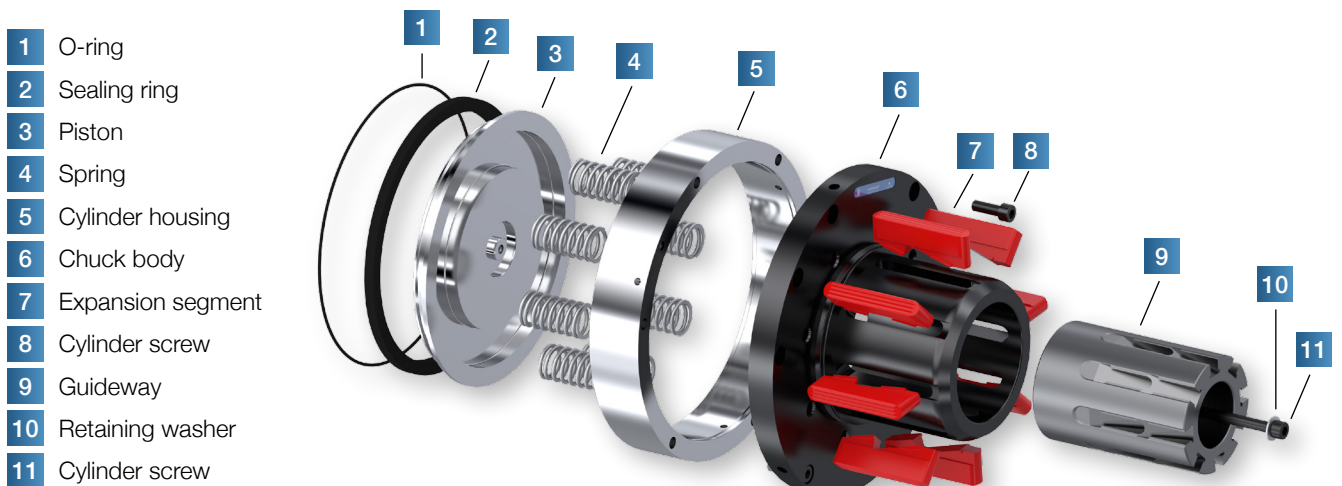
SDE Core Chucks are actuated by compressed air via an integrated piston. They clamp the core precisely in the center without slipping thanks to a large expansion range.

*Maximum productivity thanks to minimal changeover and maintenance times.*



## Core Chuck

Type	SDE 20			SDE 25			Easy-Service-Concept
Internal core ø mm	70	3"	6"	70	3"	6"	Thanks to the <i>Easy-Service-Concept</i> , normal cleaning and maintenance work is carried out from the outside without removal of the Core Chuck from the machine.
Expansion range mm	69-80	74-85	148-159	69-80	74-85	148-159	
max. Load per Mandrel N	12'500	20'000	20'000	17'500	25'000	30'000	
Torque Nm MT/POM Profile	300	430	860	450	600	1360	
Torque Nm RP Profile	520	720	1520	680	1140	2580	
Operating pressure bar	6			6			
Bearing case mm	245			295			
Bolt circle ø mm	222			274			
Service option	Front dismantling <i>Easy-Service-Concept</i>						

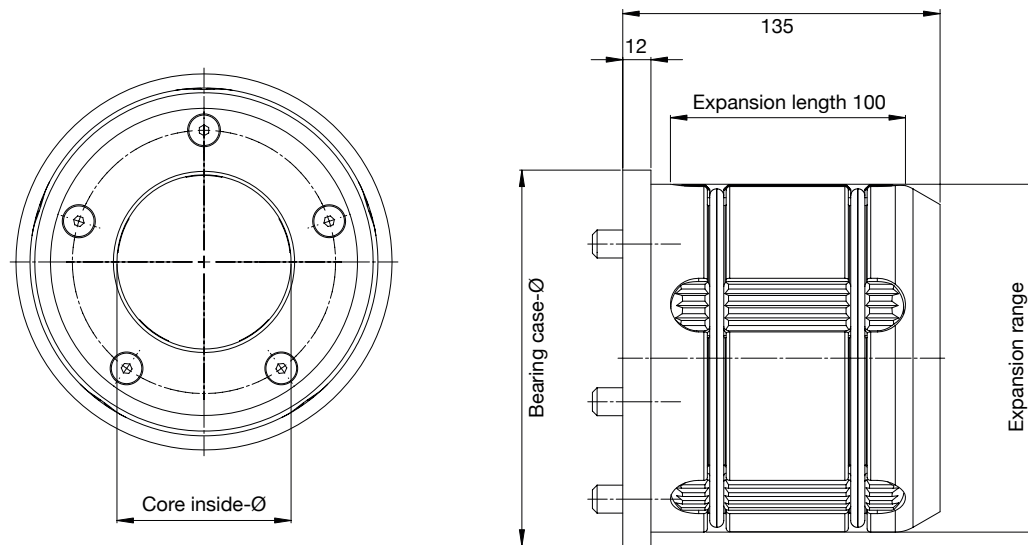


Expansion segment to SDE Core Chuck

Core material:	MT POM	MT Steel	RP Steel	LT Steel	PUR Steel	LBS POM	2K
Cardboard	x	x	x	x		x	
Plastic	x	x	x	x	x	x	x
Steel	x	x			x		x

# Adapter

SDE Core Chucks can be quickly applied to other core diameters by means of plug-on adapters between 70 mm and over 300 mm (3"-12") converted. Highest productivity thanks to precise winding of the roller with minimal changeover and maintenance times.








## Adapter

for the following SDE	SDE 20			SDE 25		
Core inner ø from Core Chuck mm	70	3"	6"	70	3"	6"
Expansion range adapter mm	148-158	148-158	298-308	148-158	148-158	298-308
Bearing case mm	160		312	160		312
Bolt circle ø mm	120		190	120		190



- 1 Threaded bolts
- 2 Cylinder screw
- 3 Expansion segment
- 4 Adapter body
- 5 Retracting spring
- 6 Threaded pin

Expansion segment to adapter					
					
Core material:	MT Steel	RP Steel	LT Steel	PUR Steel	2K
Cardboard	x	x	x		
Plastic	x	x	x	x	x
Steel	x		x	x	x

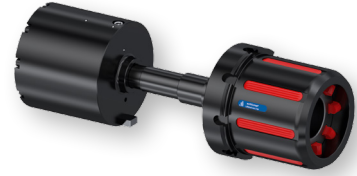


# More SDE Core Chucks

## SDE with an external actuating cylinder (EXA)

*Pneumatic- Mechanical actuation*

- high torque with a small winding part
- Mechanical actuation by means of external actuation cylinder



## SDE SF Core Chuck

*Mechanically actuated*

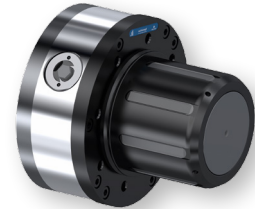
- Operational safety by spring tension
- minimal conversion and maintenance times *Easy-Service-Concept*
- can be changed with Adapter to any core diameter



## Mechanical Core Chuck

*Mechanically actuated*

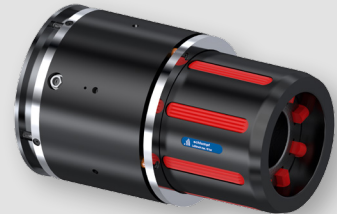
- Mechanically centric expansion of the expansion segments
- manual expanding and release



## SDE with integrated switching ring

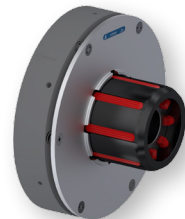
*Pneumatic- Mechanical actuation*

- Automation by core position detection
- compact

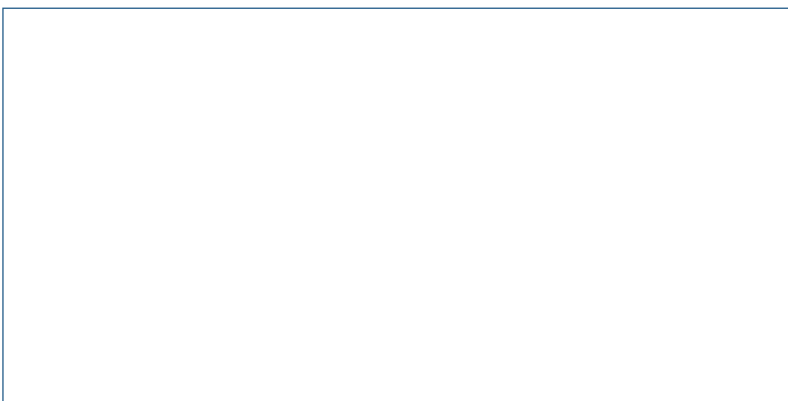


## SDE switching ring

- Automation by core position detection
- used for all SDE Core Chucks



## Sales partner



**Schlumpf AG**

Aahusweg 8  
6403 Küssnacht am Rigi  
Switzerland

Phone +41 41 784 43 43

Fax +41 41 784 43 44

info@schlumpf-ag.com

www.schlumpf-ag.com