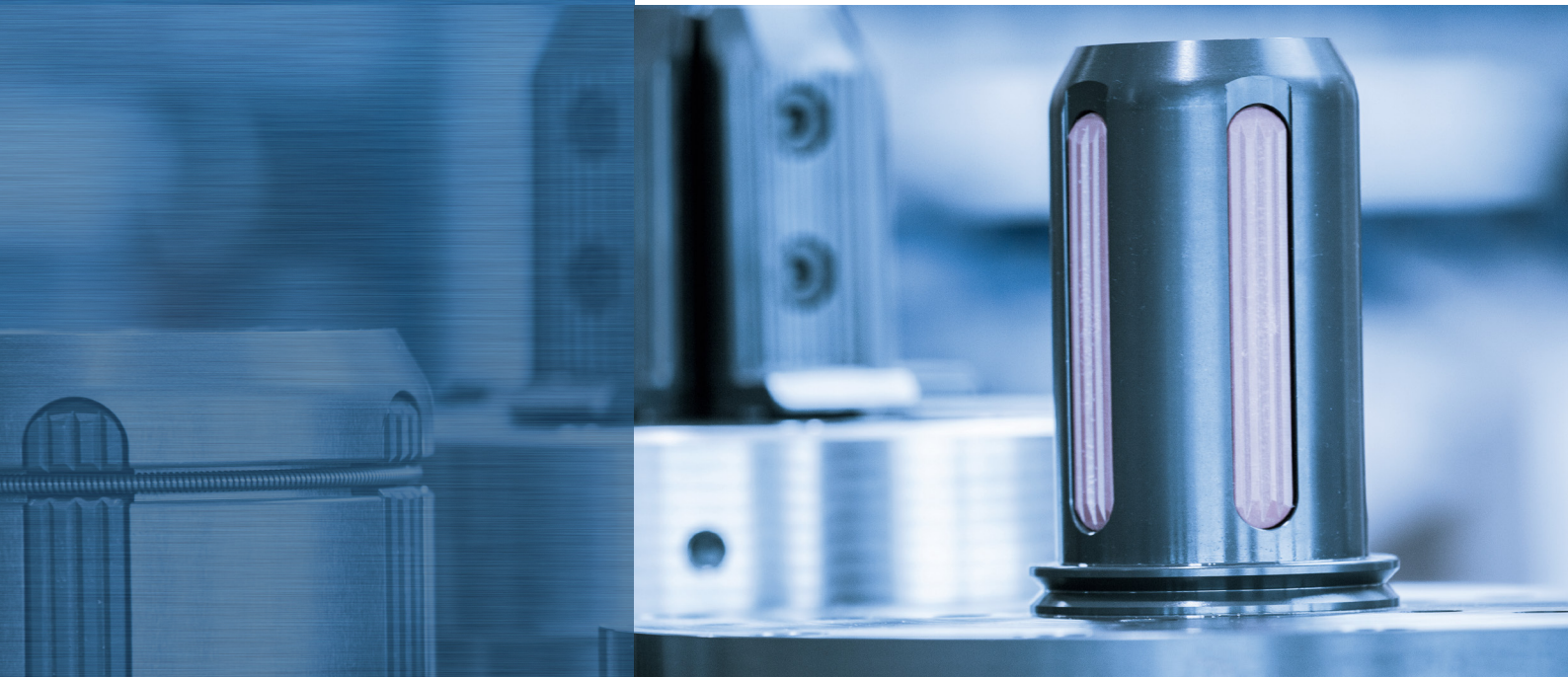


Relax in our exciting world
of winding technology





Competence for individual and world-wide winding technology

In the exciting world of winding systems and winding components for the processing machinery industry, you can relax and completely rely on our experience and competence.

«Our **experience** for your requirements»

For more than 60 years, customers from all over the world have trusted in our professional know-how, the products we have proudly and carefully created, as well as our comprehensive services.

We are one of the world's most important manufacturers of high quality Core Chucks, winding shafts and other winding elements.

«Our **products** for your purposes»

Our comprehensive range offers, in addition to convincing standard products from the in-house think tank, and the complementary distribution of handling and logistics products, primarily custom-developed winding components.

As a manufacturer of custom-built special constructions for demanding applications, we have made a name for ourselves, due to many years of practical experience.

«Our **expertise** for your requirements»

Among other things, our development, which has been documented for many years, enables us to achieve a high level of competence and professionalism.

Our focus is on individual and holistic customer requirements, with the aim of providing you with the highest possible economic efficiency and sustainability. With excellent service from engineering to delivery, the greatest possible flexibility and exceptional reliability, we ensure that we remain a dependable and stable partner in the future.

With open eyes and ears in the market, we continue to develop passionate and innovative winding technology with a view to the future, to provide you with the optimal customer solution.

We provide you with our knowledge and skills to make visions a reality.

Increase your productivity with minimal maintenance costs

SDE and SDJ Core Chucks with *Easy-Service-Concept*

Maintenance in less than 5 minutes **WITHOUT** removing the Core Chuck!

For us it's a matter of course. And for you? The SDE and SDJ Core Chucks from the company Schlumpf AG minimize maintenance costs and shorten maintenance times to a few minutes.

Our SDE and SDJ Core Chucks for the axle-free up-and-down path-shaped materials guarantee trouble-free operation, meaning your machine is easily and efficiently maintained.

Do not put your highest value asset at risk and secure your ROI with proper investment.

Our Core Chucks help you to achieve a sustainable competitive advantage, whether you roll weights up to 9 tons mechanically or pneumatically.

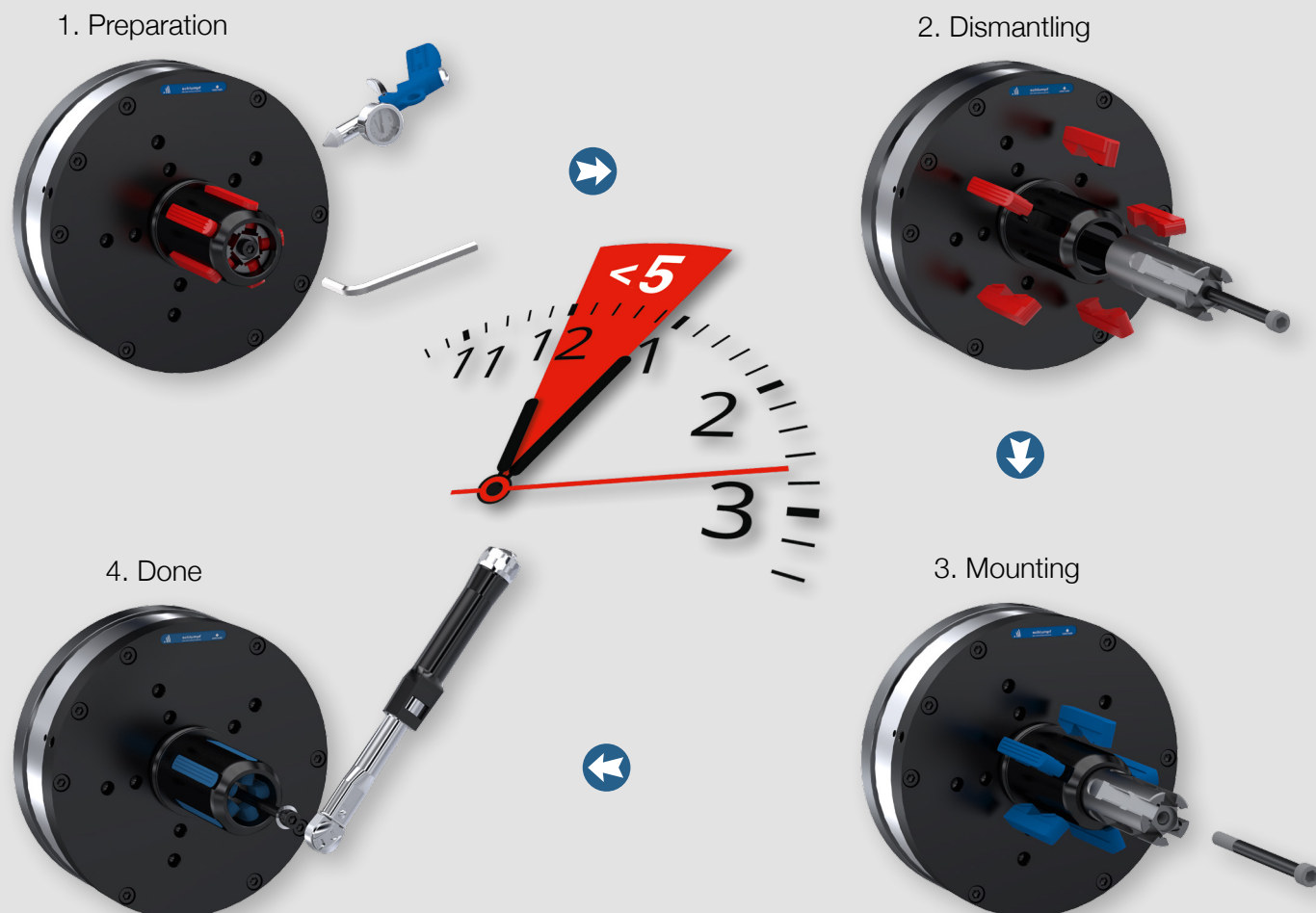
The SDE and SDJ Core Chucks, which guarantee maximum flexibility due to their unique adaptation method, are capable of winding core up to 600 mm.

We would be pleased to advise you from the design of your solution to the implementation and execution.

«Anyone can count on investing in intelligently designed components!»

Unique *Easy-Service-Concept*

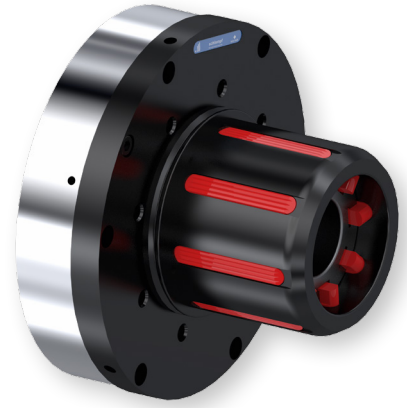
Maintenance in less than **5 minutes** **WITHOUT** removing the Core Chuck!



SDE Core Chuck

Pneumatic- Mechanical actuation

- High torque transmission
- mechanically-centric expansion of the expansion segments
- minimal conversion and maintenance times *Easy-Service-Concept*
- can be changed with Adapter to any core diameter



SDE Adapter

- quickly change the adapter on the machine
- can be changed on any core diameter



SDE switching ring

- Automation by core position detection
- used for all SDE Core Chucks



SDE with an external actuating cylinder (EXA)

Pneumatic- Mechanical actuation

- high torque with a small winding part
- Mechanical actuation by means of external actuation cylinder



SDJ Core Chuck

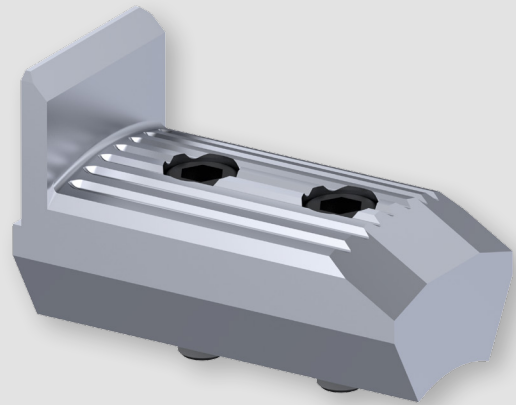
Pneumatic- Mechanical actuation

- large expansion range
- minimal conversion and maintenance times *Easy-Service-Concept*
- can be changed on any core diameter
- also available in spring tension design



SDJ Support Jaw

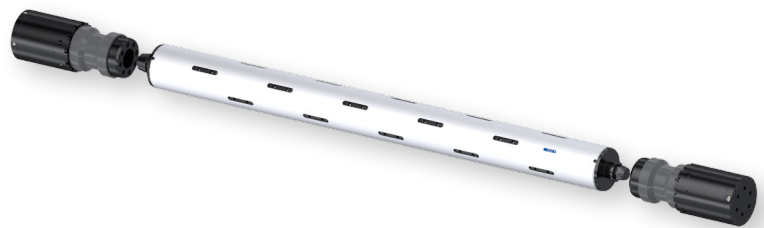
- can be switched directly on the machine
- any core diameter possible



Shaft between Core Chucks

Pneumatic- Mechanical actuation

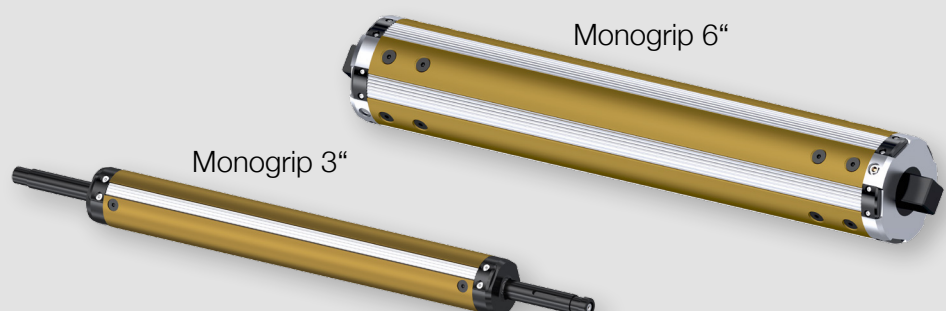
- flexible application of Core Chucks and/or winding shaft
- flexible product processing



MonoGrip Flate-Tube-Shaft 3" and 6"

Pneumatic actuation

- low weight with high load
- continuous clamping surface



Quick Chuck + Adapter

Mechanical actuation by means of web tension and roll weight

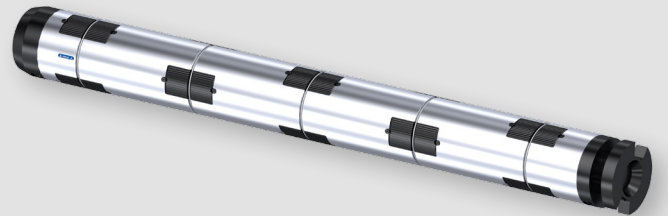
- Expansion of the winding elements by rotational movement of the web tension
- mechanically-centric expansion of winding bars
- transmits high torques
- expand independent of the direction of rotation
- can be changed on any core diameter



Quick Chuck Winding Shaft

Mechanical actuation by means of web tension and roll weight

- Expansion of the winding elements by rotational movement of the web tension
- mechanically-centric expansion of winding bars
- transmits high torques
- expand independent of the direction of rotation



SDA Core Chuck

Tightened by axial displacement

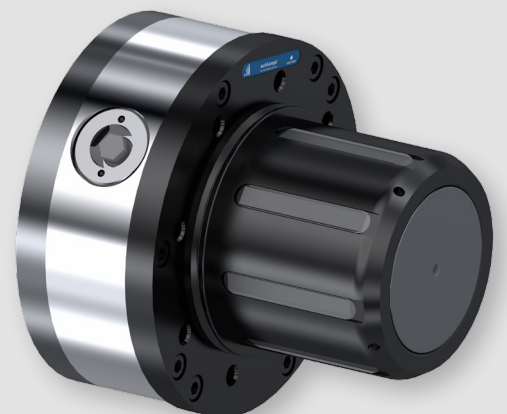
- mechanically-centric expansion of expansion segments
- high torque



Mechanical Core Chuck

Mechanical actuation

- mechanically-centric expansion of expansion segments
- manual expanding and release



SDE SF Core Chuck

Mechanical actuation

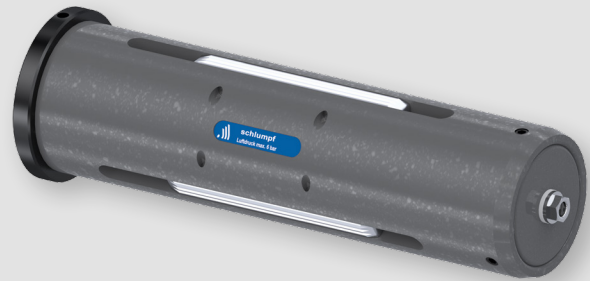
- Operational safety due to spring tension
 - minimal conversion and maintenance times
- Easy-Service-Concept*
- can be changed with Adapter to any core diameter



SDX Core Chuck

Pneumatic- Mechanical actuation

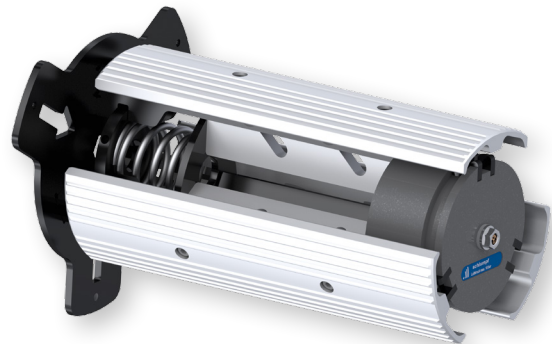
- lightweight construction
- wide range of applications



SKE Core Chuck

Pneumatic actuation

- Large expansion range
- coreless winding

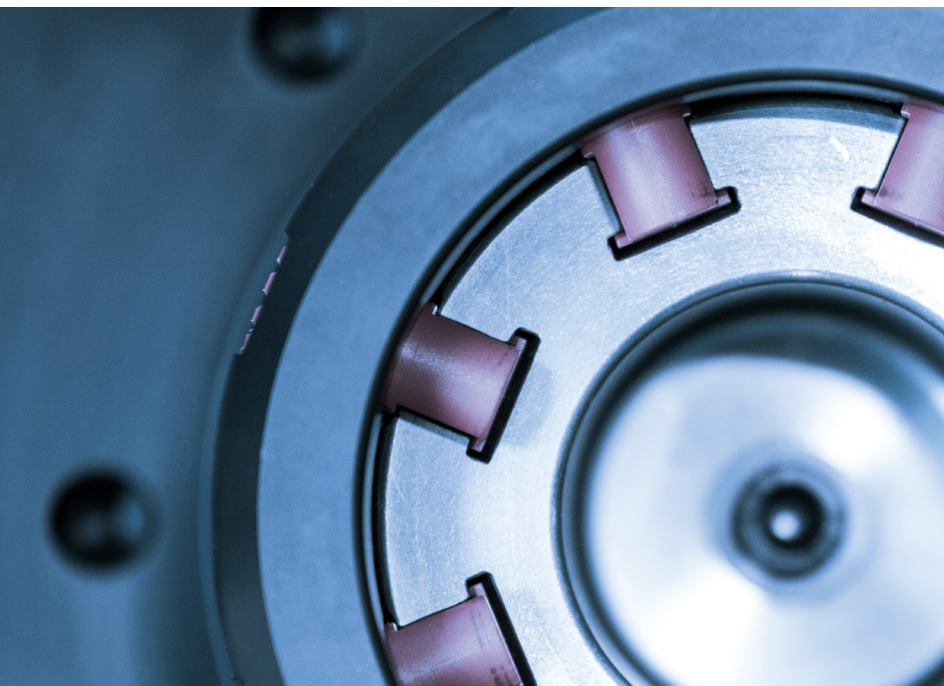


Winding Chucks

Pneumatic actuation

- Outer diameter of 100 mm
- versatile application





Sales Partners Worldwide

Germany – Austria – Hungary – Czech Republic – Slovakia

Block & Mohr GmbH, Ibbenbüren, Germany

www.block-mohr.com

Netherlands

Kluin Romak B.V., Epe, Netherlands

www.kluin-romak.nl

France, Maghreb states

Erhardt & Leimer France SARL, Mulhouse, France

www.erhardt-leimer.fr

Scandinavia

Schlumpf Scandinavia AB, Arsta, Sweden

www.schlumpfs Scandinaviaab.se

Spain

Copapres, El Masnou, Spain

www.copapres.com

America, Canada, South America

Schlumpf USA, Windham, USA

www.schlumpf-inc.com

Belgium, Luxembourg

AGEPA sprl., Vith, Belgium

www.agepa.com



Schlumpf AG

Aahusweg 8

6403 Küssnacht am Rigi

Switzerland

Phone +41 41 784 43 43

Fax +41 41 784 43 44

info@schlumpf-ag.com

www.schlumpf-ag.com