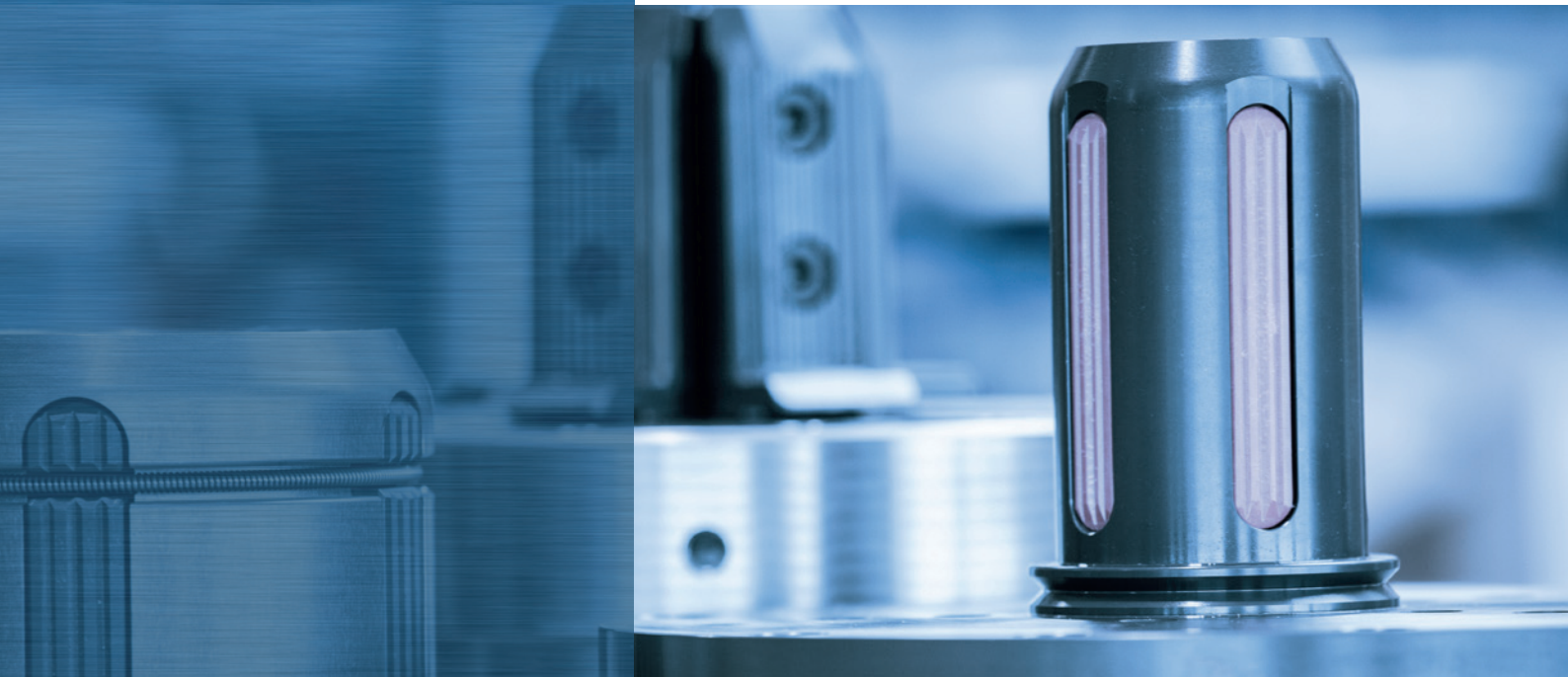
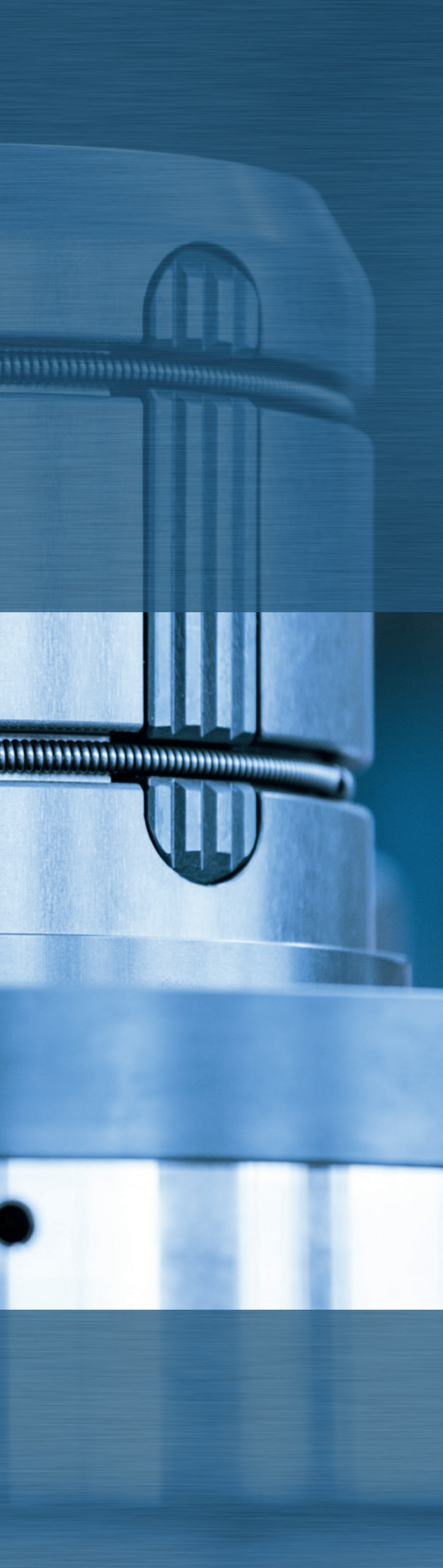


Relax in our exciting world
of winding technology





Competence for individual and world-wide winding technology

In the exciting world of winding systems and winding components for the processing machinery industry, you can relax and completely rely on our experience and competence.

«Our **experience** for your requirements»

For more than 60 years, customers from all over the world have trusted in our professional know-how, the products we have proudly and carefully created, as well as our comprehensive services.

We are one of the world's most important manufacturers of high quality Core Chucks, winding shafts and other winding elements.

«Our **products** for your purposes»

Our comprehensive range offers, in addition to convincing standard products from the in-house think tank, and the complementary distribution of handling and logistics products, primarily custom-developed winding components.

As a manufacturer of custom-built special constructions for demanding applications, we have made a name for ourselves, due to many years of practical experience.

«Our **expertise** for your requirements»

Among other things, our development, which has been documented for many years, enables us to achieve a high level of competence and professionalism.

Our focus is on individual and holistic customer requirements, with the aim of providing you with the highest possible economic efficiency and sustainability. With excellent service from engineering to delivery, the greatest possible flexibility and exceptional reliability, we ensure that we remain a dependable and stable partner in the future.

With open eyes and ears in the market, we continue to develop passionate and innovative winding technology with a view to the future, to provide you with the optimal customer solution.

We provide you with our knowledge and skills to make visions a reality.

Increase your productivity with minimal maintenance costs

SDE and SDJ Core Chucks with *Easy-Service-Concept*

Maintenance in less than 5 minutes **WITHOUT** removing the Core Chuck!

For us it's a matter of course. And for you? The SDE and SDJ Core Chucks from the company Schlumpf AG minimize maintenance costs and shorten maintenance times to a few minutes.

Our SDE and SDJ Core Chucks for the axle-free up-and-down path-shaped materials guarantee trouble-free operation, meaning your machine is easily and efficiently maintained.

Do not put your highest value asset at risk and secure your ROI with proper investment.

Our Core Chucks help you to achieve a sustainable competitive advantage, whether you roll weights up to 9 tons mechanically or pneumatically.

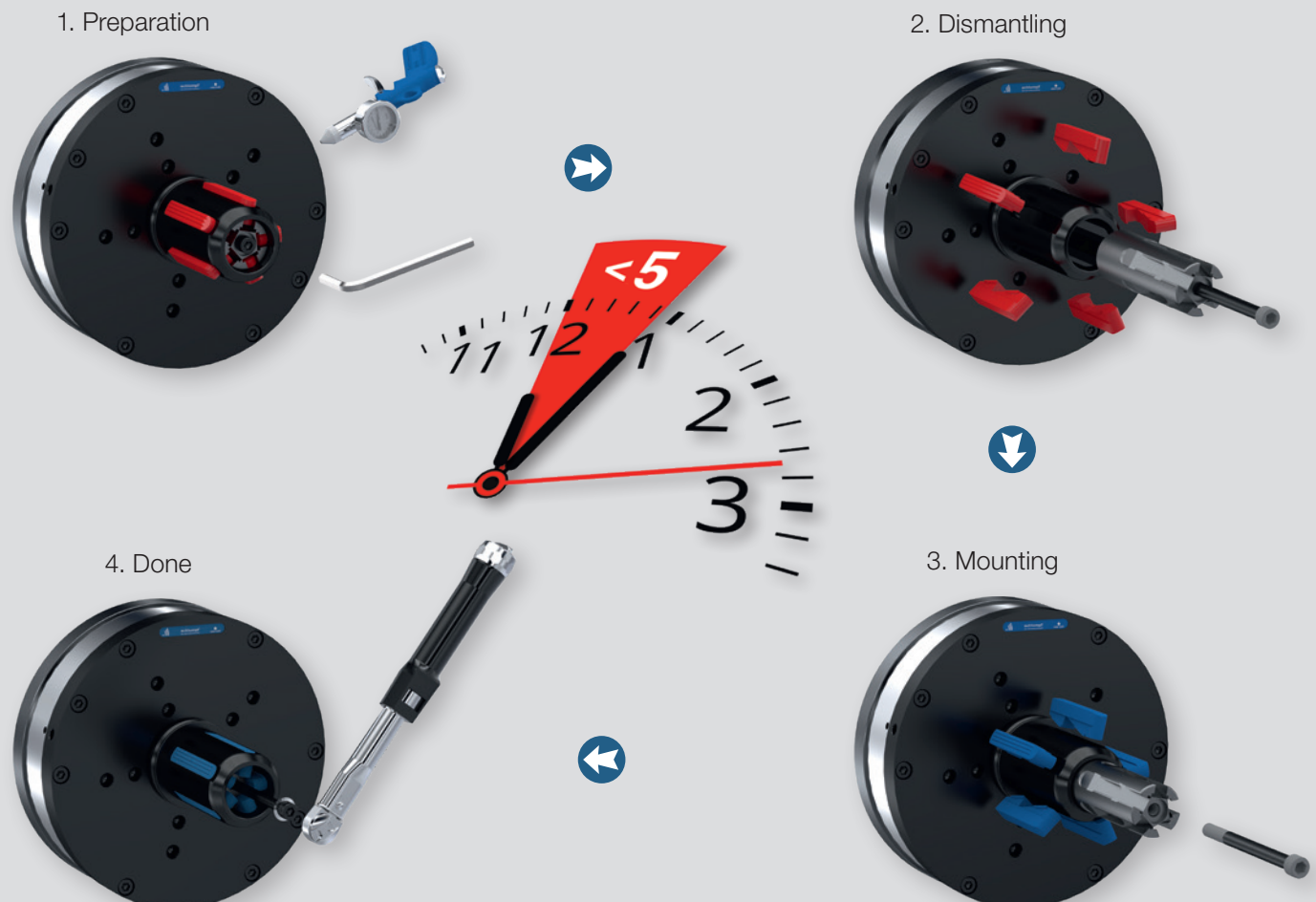
The SDE and SDJ Core Chucks, which guarantee maximum flexibility due to their unique adaptation method, are capable of winding core up to 600 mm.

We would be pleased to advise you from the design of your solution to the implementation and execution.

«Anyone can count on investing in intelligently designed components!»

Unique Easy-Service-Concept

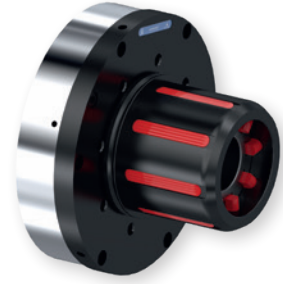
Maintenance in less than **5 minutes** **WITHOUT** removing the Core Chuck!



SDE Core Chuck

Pneumatic- Mechanical actuation

- High torque transmission
- Mechanically-centric expansion of the expansion segments
- Minimal conversion and maintenance times Easy-Service-Concept
- Can be changed with Adapter to any core diameter



SDE Adapter

- Quickly change the adapter on the machine
- Can be changed on any core diameter



SDE with an external actuating cylinder (EXA)

Pneumatic- Mechanical actuation

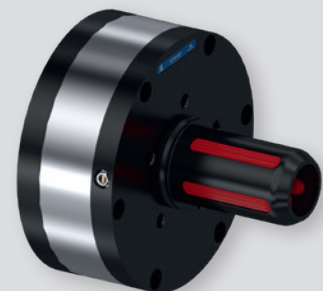
- High torque with a small winding part
- Mechanical actuation by means of external actuation cylinder



SDE SF Core Chuck

Mechanical operation

- Operational safety through spring tension
- Minimum changeover and maintenance times due to Easy Service concept
- Can be extended with adapters to any core diameter
- Available as 70mm, 3“,6“ or in customized size



SDA Core Chuck

Tightened by axial displacement

- Mechanically-centric expansion of expansion segments
- High torque



SDJ Core Chuck

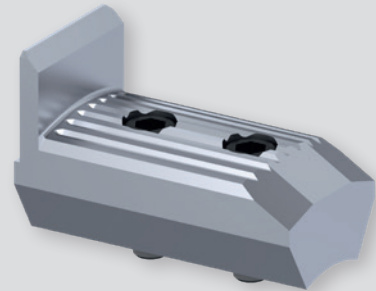
Pneumatic- Mechanical actuation

- Large expansion range
- Minimal conversion and maintenance times Easy-Service-Concept
- Can be changed on any core diameter
- Also available in spring tension design



SDJ Support Jaw

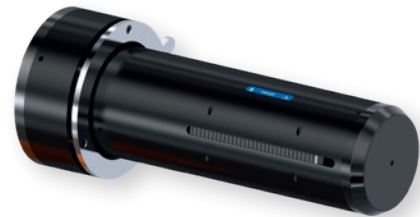
- Can be switched directly on the machine
- Any core diameter possible



SDH Core Chuck

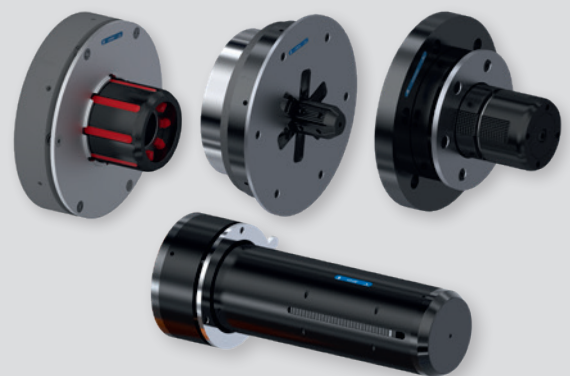
Pneumatic or mechanical operation

- Steel or aluminium versions
- Large expansion range
- Different clamping bars available
- Optionally also available with core position dedection



Switching rings

- Automation through core position dedection
- For all chucks type SDE, SDJ, Quick Chuck and SDH



Quick Chuck + Adapter

Mechanical actuation by means of web tension and roll weight

- Expansion of the expansion segments by rotational movement of the web tension
- Mechanically-centric expansion of the expansion segments
- Transmits high torques
- Expansion independent of the direction of rotation
- Can be changed on any core diameter



CTA/S pneumatic expansion shaft

Pneumatic - Actuation

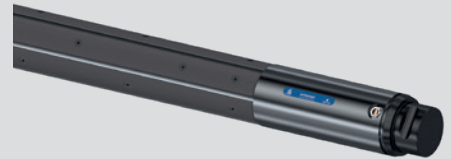
- Actuation by compressed air
- For high torque transmissions and loads
- Positioning of the clamping bars for each core width



CTC/S pneumatic expansion shaft

Pneumatic - Actuation

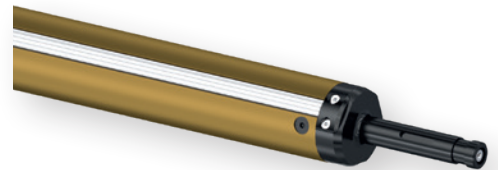
- Actuation by compressed air
- For Material-friendly application and thin-walled cores
- Continuous expansion segments



MonoGrip pneumatic expansion shaft

Pneumatic operation

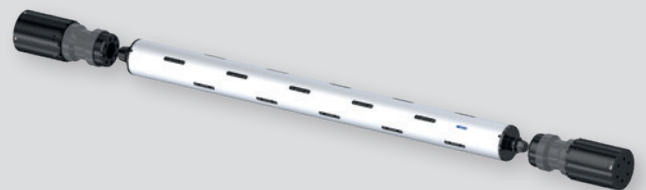
- Actuation by compressed air
- Light, standardised and inexpensive
- Continuous or sectionated expansion segments



Shaft between Core Chucks

Pneumatic- Mechanical actuation

- Flexible application of Core Chucks and/or winding shaft
- Flexible product processing



SKE Core Chuck

Pneumatic actuation

- Large expansion range
- Coreless winding



SFA mechanical expansion shaft

Mechanical - pneumatic operation

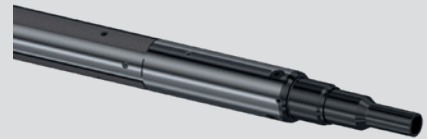
- Spring loaded and air released
- Permanent power transmission
- Positioning of the clamping bars for each core width



SFC mechanical expansion shaft

Mechanical - pneumatic operation

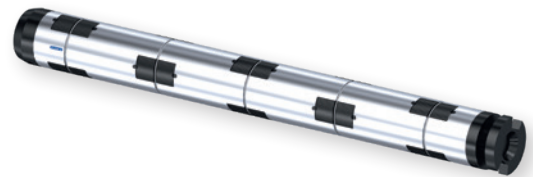
- Spring loaded and air released
- Permanent power transmission
- Continuous expansion segments



Quick Chuck Winding Shaft

Mechanical actuation by means of web tension and roll weight

- Expansion of the winding elements by rotational movement of the web tension
- Mechanically-centric expansion of winding bars
- Transmits high torques
- Expand independent of the direction of rotation



Winding Chucks

Pneumatic actuation

- Outer diameter of 100 mm
- Versatile application



SDX Core Chuck

Pneumatic- Mechanical actuation

- Lightweight construction
- Wide range of applications





Sales partners worldwide

Switzerland, Liechtenstein, Italy and other countries worldwide

Schlumpf AG, Küssnacht am Rigi, Schweiz

www.schlumpf-ag.com

Germany - Austria - Hungary - Czech Republic - Slovakia

Block & Mohr GmbH, Ibbenbüren, Deutschland

www.block-mohr.com

United Kingdom

Arrowhive Equipment Ltd., Sonning Common Reading

www.arrowhive.co.uk

The Netherlands

Kluin Romak B.V., Epe, Nederlande

www.kluin-romak.nl

France, Maghreb states

Erhardt & Leimer France SARL, Mulhouse, Frankreich

www.erhardt-leimer.fr

Scandinavia

Schlumpf Scandinavia AB, Skarpnäck, Schweden

www.schlumpfscandinaviaab.se

Spain

Copapres, El Masnou, Spanien

www.copapres.com

Belgium, Luxemburg

AGEPA sprl., St. Vith, Belgien

www.agepa.com



Schlumpf AG

Aahusweg 8

6403 Küssnacht am Rigi

Switzerland

Schlumpf GmbH

Eichstetter Strasse 55c

79232 March

Germany

Phone +41 41 784 43 43

Fax +41 41 784 43 44

info@schlumpf-ag.com

www.schlumpf-ag.com