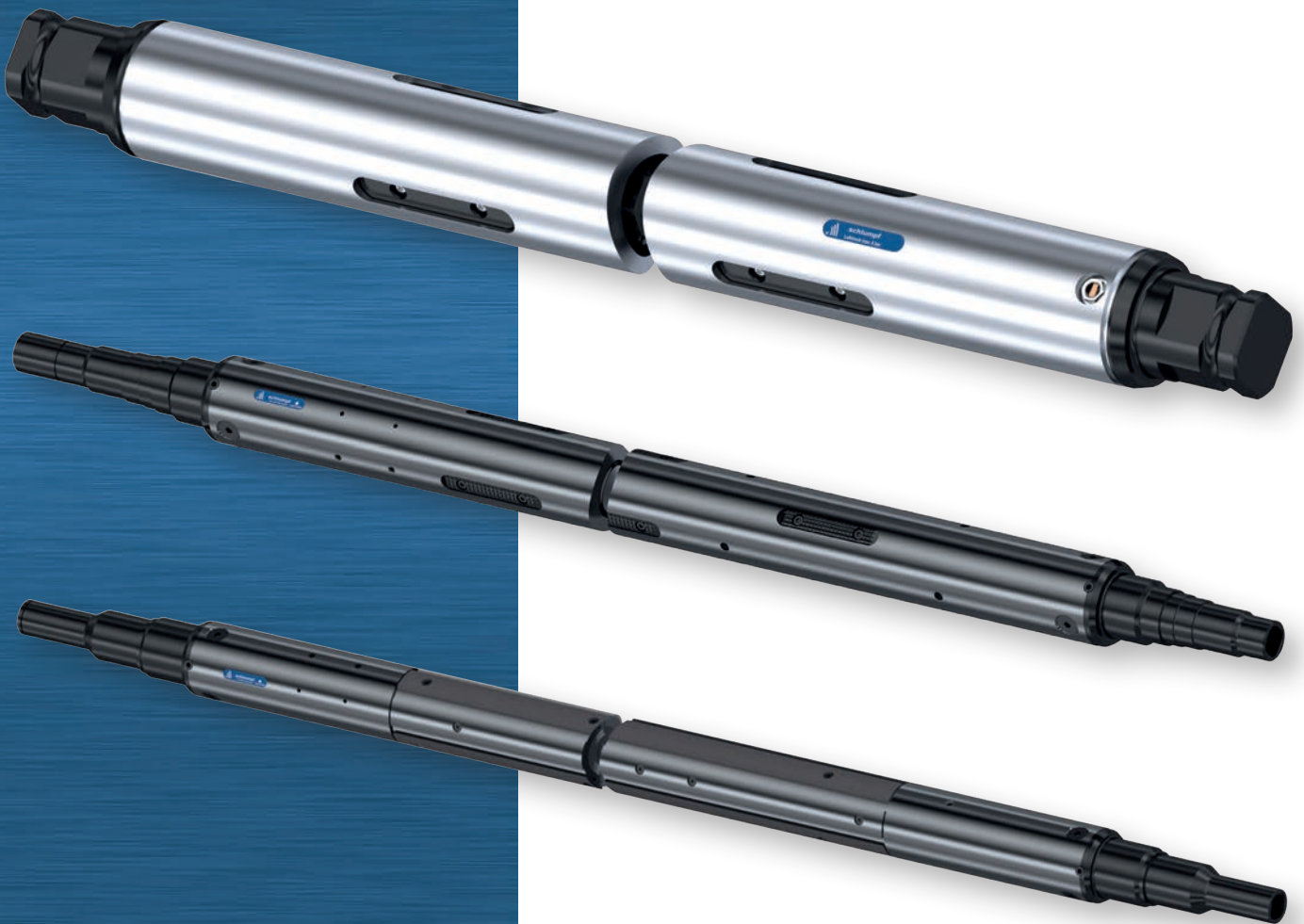
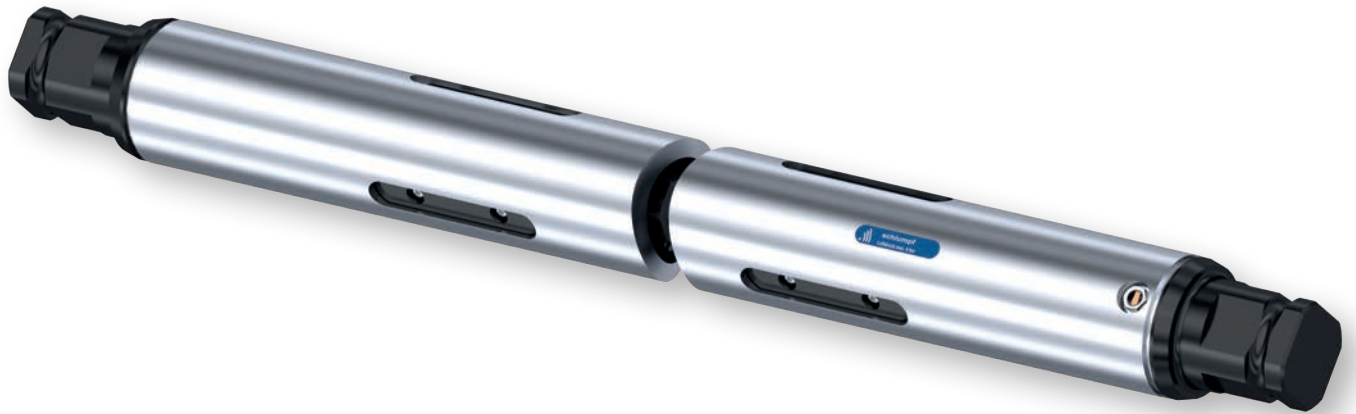


Technical information

Mechanical and pneumatic expansion shafts



CTA/S pneumatic expansion shafts

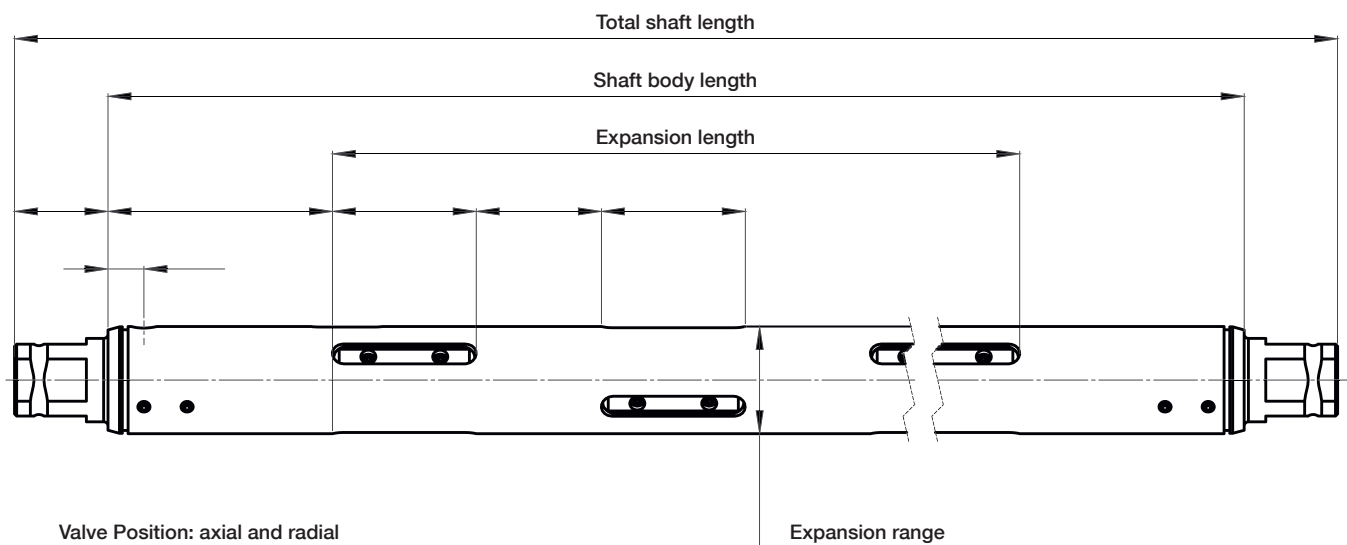


The robust model for high torque transmission and load

The CTA/S expansion shaft is a robust and reliable central tubing shaft which is particularly suitable for high torque transmission and loads. The selection of different expansion bars makes a wide range of applications with different core materials possible.

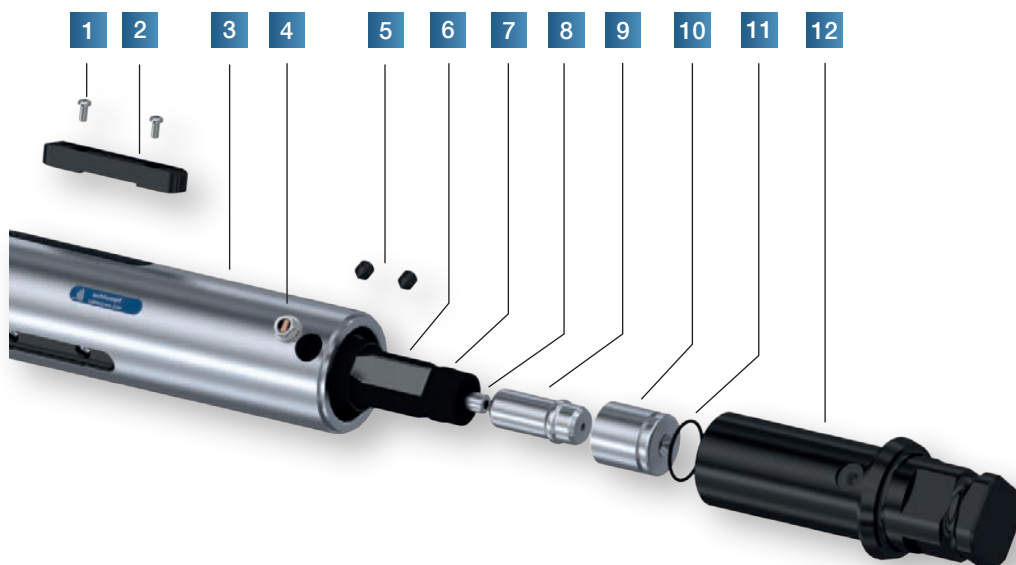
This expansion shaft is available in high-tensile steel and aluminium or in CFRP.

Depending on its application, the expansion shaft can be made with pre-centring and balanced up to G2.5.



CTA/S Expansion shaft	70	3 inch	6 inch	Customized
Core inner ϕ mm	70	76.2	152.4	50-450
Expansion range mm	69.5-74	74.5-79	150-157	on demand

- 1 Screw
- 2 Expansion bar
- 3 Shaft body
- 4 Valve
- 5 Hex socket screw
- 6 L-bracket
- 7 Expansion tube
- 8 Spacer tube
- 9 Clamping cone
- 10 Clamping nipple
- 11 O-Ring
- 12 Shaft end journal



Expansion bars for CTA/S Expansion shaft

	MT steel	RP steel	MTQ steel	NR
Core material	MT steel	RP steel	MTQ steel	NR
Cardboard	x	x	x	x
Plastic	x	x	x	x
Steel	x		x	x
Features of Profile	Versatile application	High torque transmission	Reduction of side shift	Core protective

CTC/S pneumatic expansion shaft

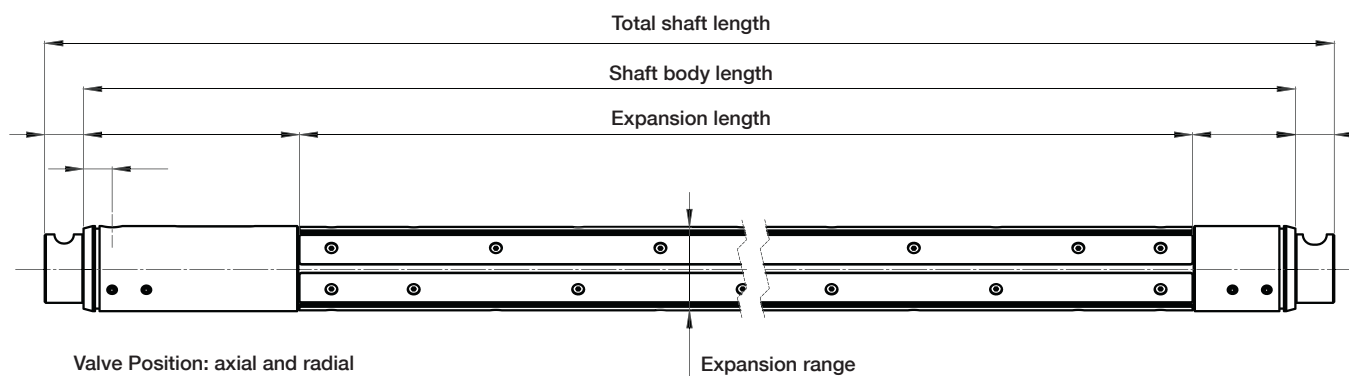


The versatile model for multi-use and core-friendly application

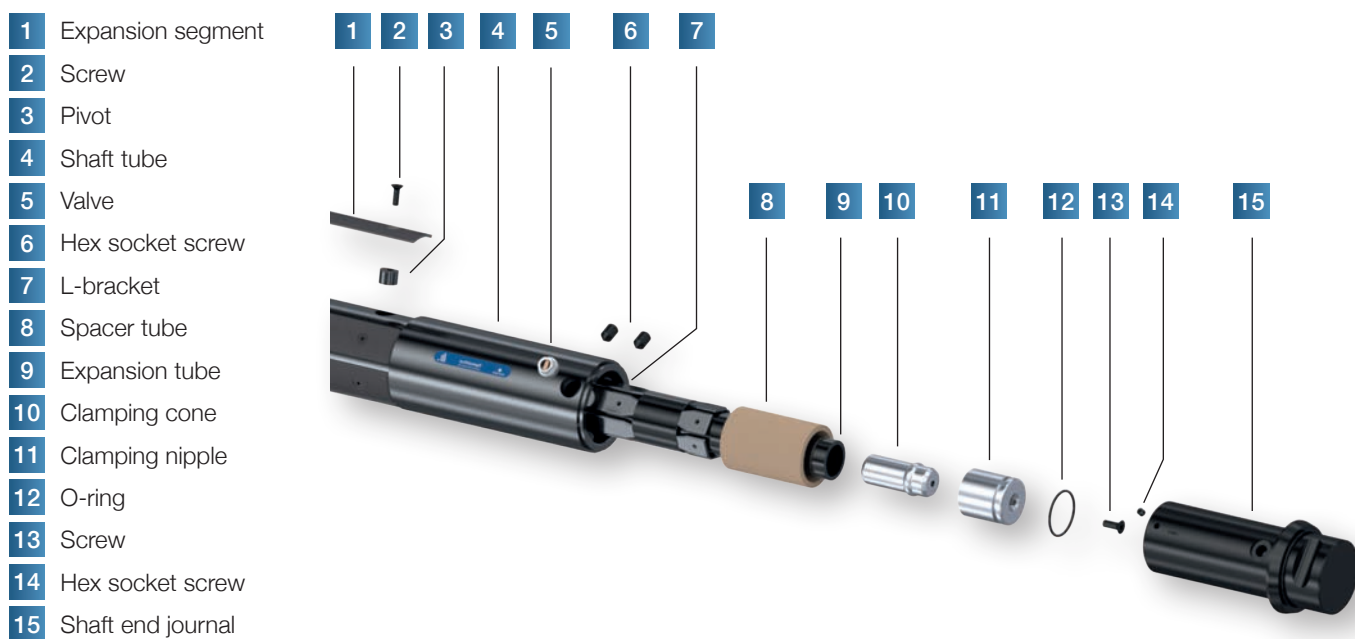
Thanks to its large expansion area the CTC/S expansion shaft is particularly suitable for a material-friendly use or when using thin-walled cores. The continuous expansion segments (coated or uncoated), enable a wide, multi-use range of applications.

The expansion shaft tube is available in high-tensile steel and aluminium or CFRP.

This model can be manufactured with pre-centring and also balanced, with a quality class of up to G2.5.



CTC/S Expansion shaft	70	3 inch	6 inch	Customized
Core inner ϕ mm	70	76.2	152.4	50-450
Expansion range mm	69-72	74.5-79	149-155	on demand



Expansion Segment

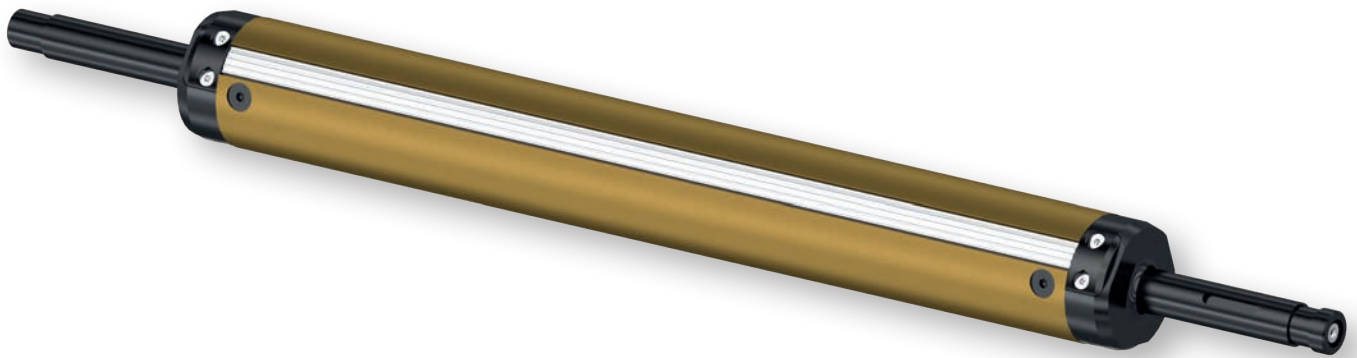


Coated



uncoated

MonoGrip pneumatic expansion shaft

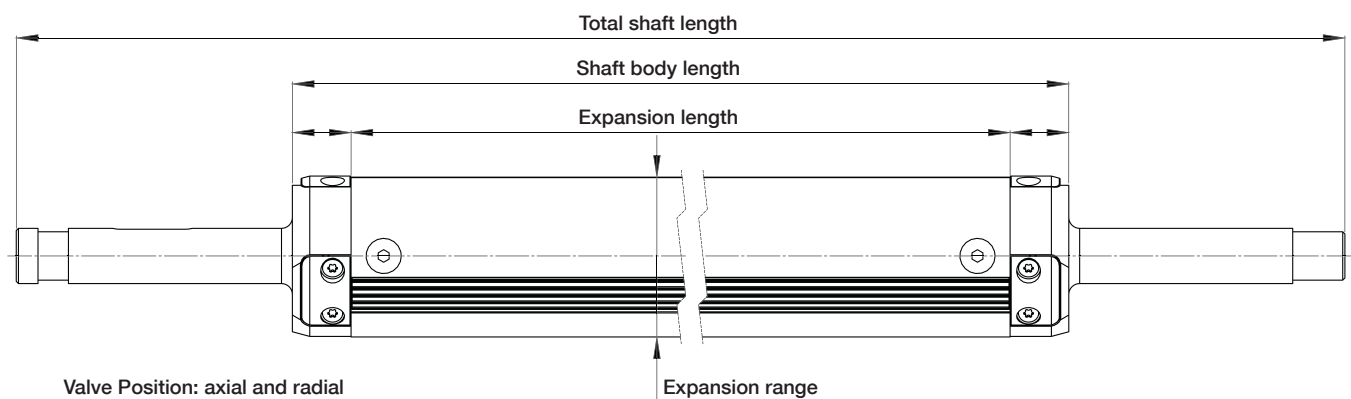


The light and inexpensive model for applications with lower requirements

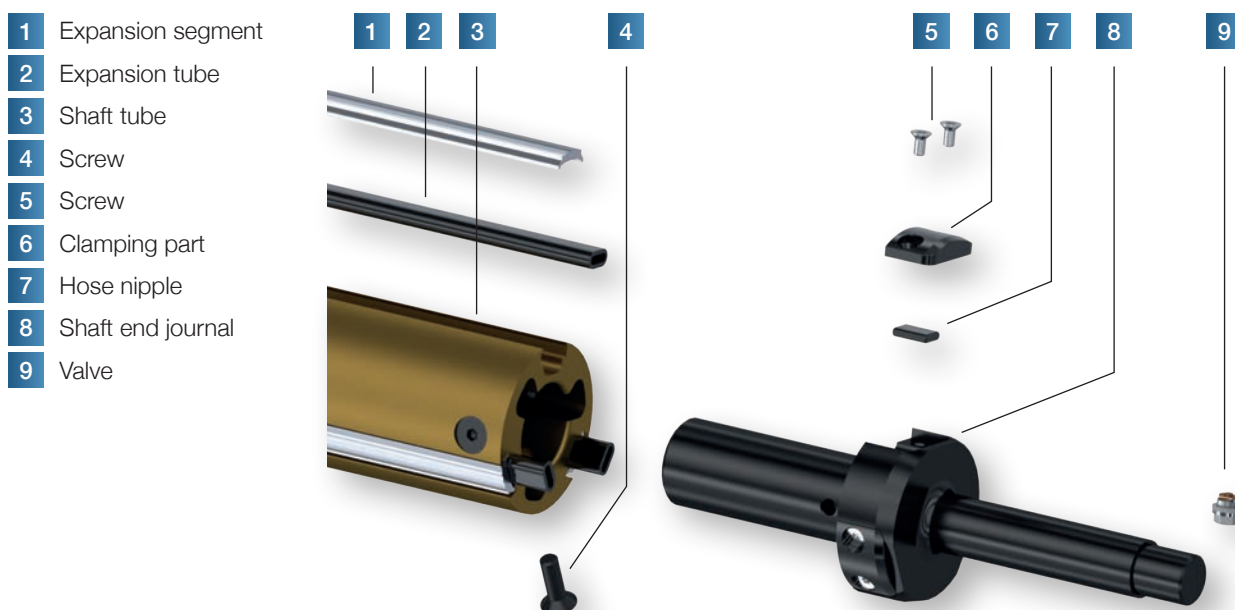
The powerful pneumatic Monogrip aluminium flat tube shaft is one of the lightest expansion shafts on the market. Compared to the central tube shaft, it is particularly suitable for lighter applications with lower torque transmission requirements.

Thanks to the solid build, its service life is much longer than that of many comparable products. The components high degree of standardisation allows for low-cost production and service-friendly maintenance.

Depending on the application and core material, the aluminium segments can be supplied as continuous or sectioned. The rubber-coated segments are arranged subdivided.



MG Expansion shaft	3 inch	6 inch
Core inner \varnothing mm	76.2	152.4
Expansion range mm	74.5-78	148-155



Expansion segments



Rubber-coated/ subdivided



Aluminium / continuous or sectioned

SFA mechanical expansion shaft

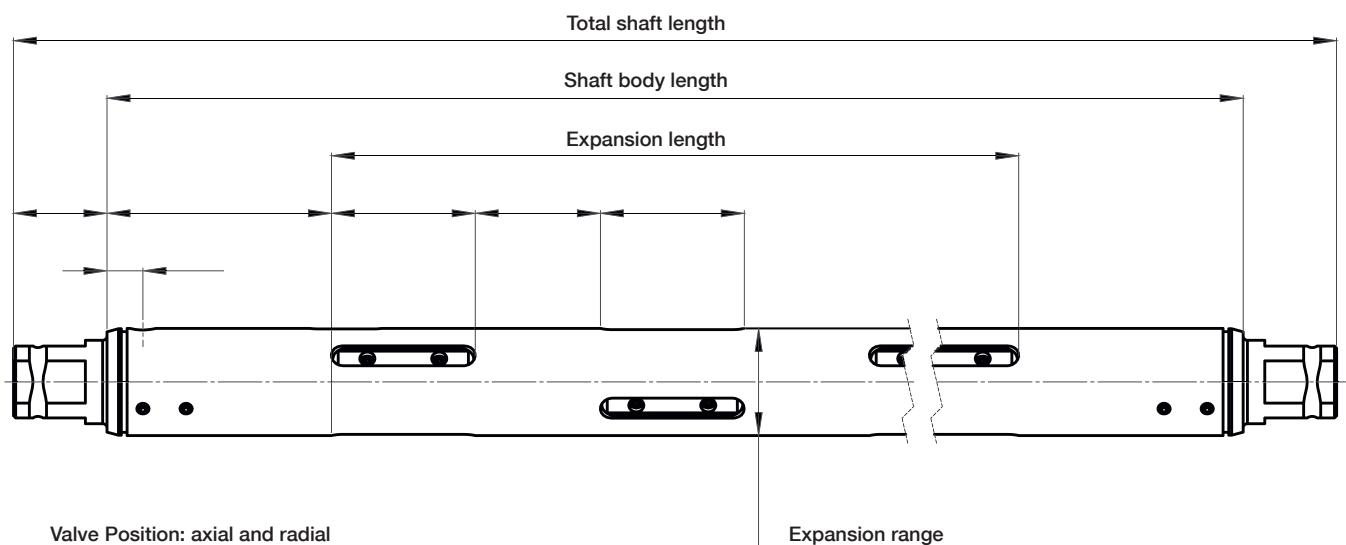


The reliable model for the highest operational safety and high track velocities

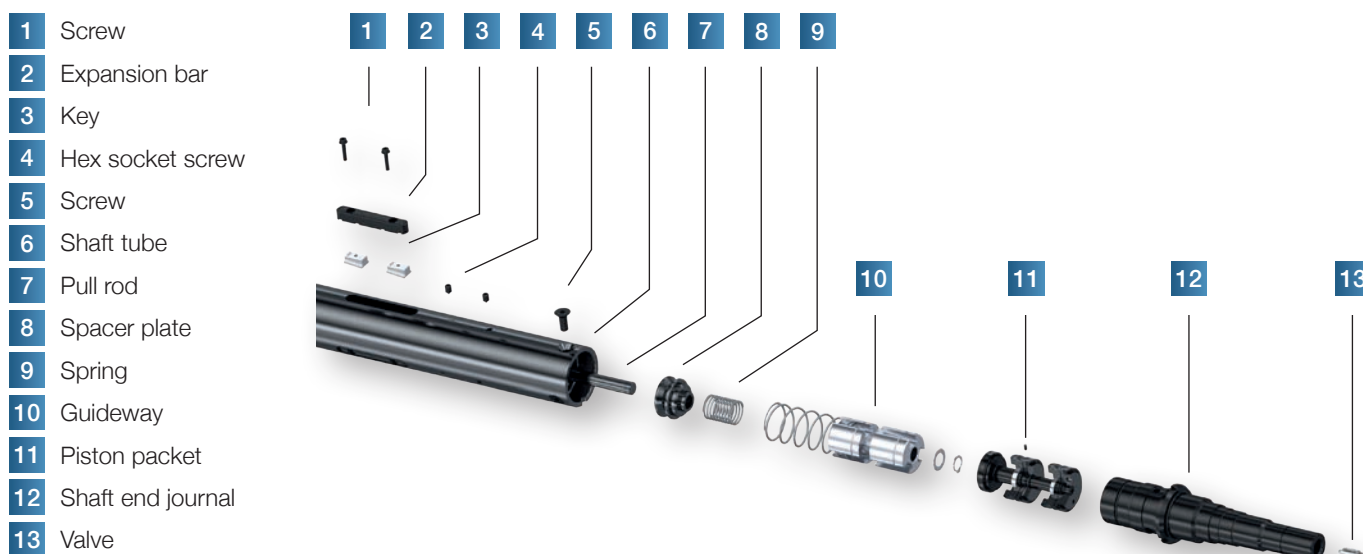
A high concentricity for high track velocities with sensitive materials distinguishes the SFA expansion shaft. A selection of different expansion bars makes it possible to use cardboard, plastic or steel cores.





Clamping by using spring force guarantees the highest operational safety with permanent power transmission with centric clamping. The expansion bars are expanded by supplying compressed air.

The SFA expansion shaft is based on the CTA expansion shaft in the mechanical model, made of high-tensile steel and can be balanced up to G2.5.

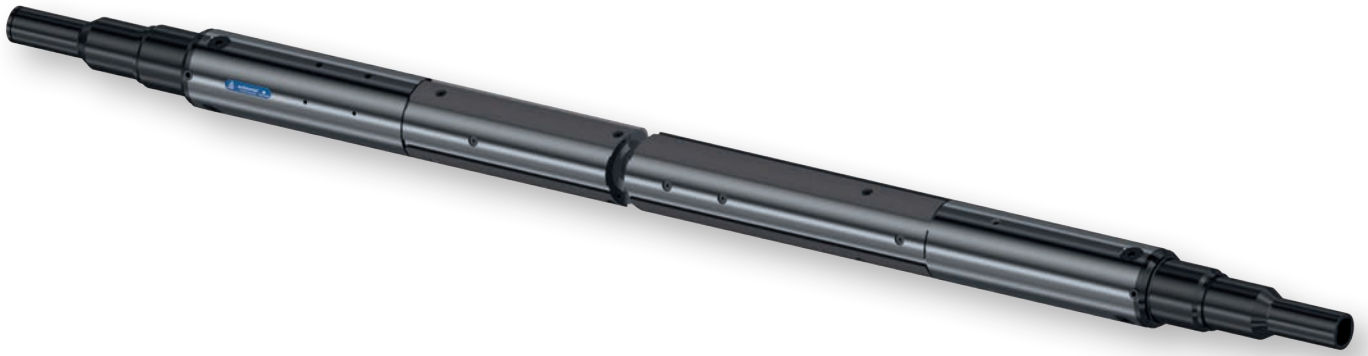


SFA Expansion shaft	70	3 inch	6 inch	on demand
Core inner ø mm	70	76.2	152.4	50-450



Expansion bars for SFA Expansion shaft				
				
Core material	MTQ steel	MT steel	RP steel	Rubber/steel/Alu
Cardboard	x	x	x	x
Plastic	x	x	x	x
Steel	X	x		x
Features of Profile	Reduction of side shift	Versatile application	High torque transmission	Core protective

SFC mechanical expansion shaft

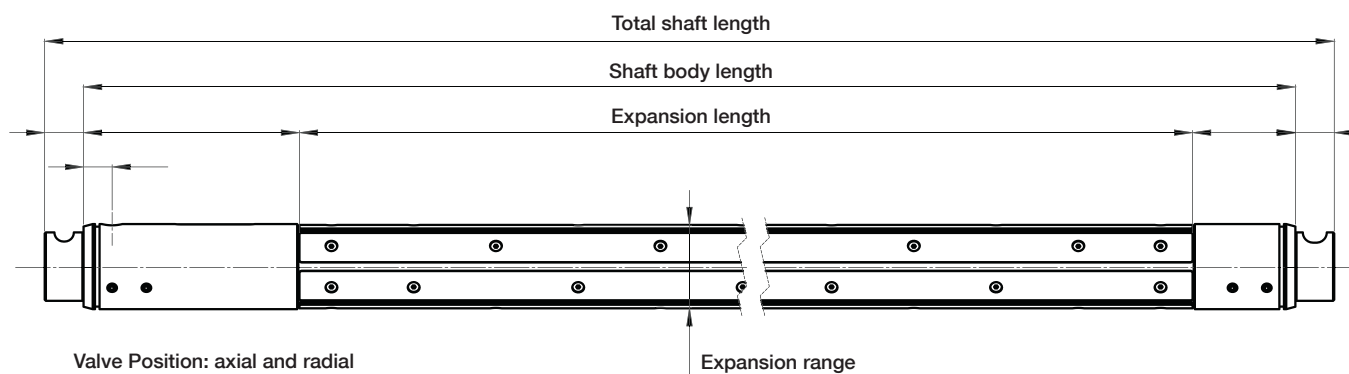


The reliable model for the highest operational safety and multi-use or core-friendly application

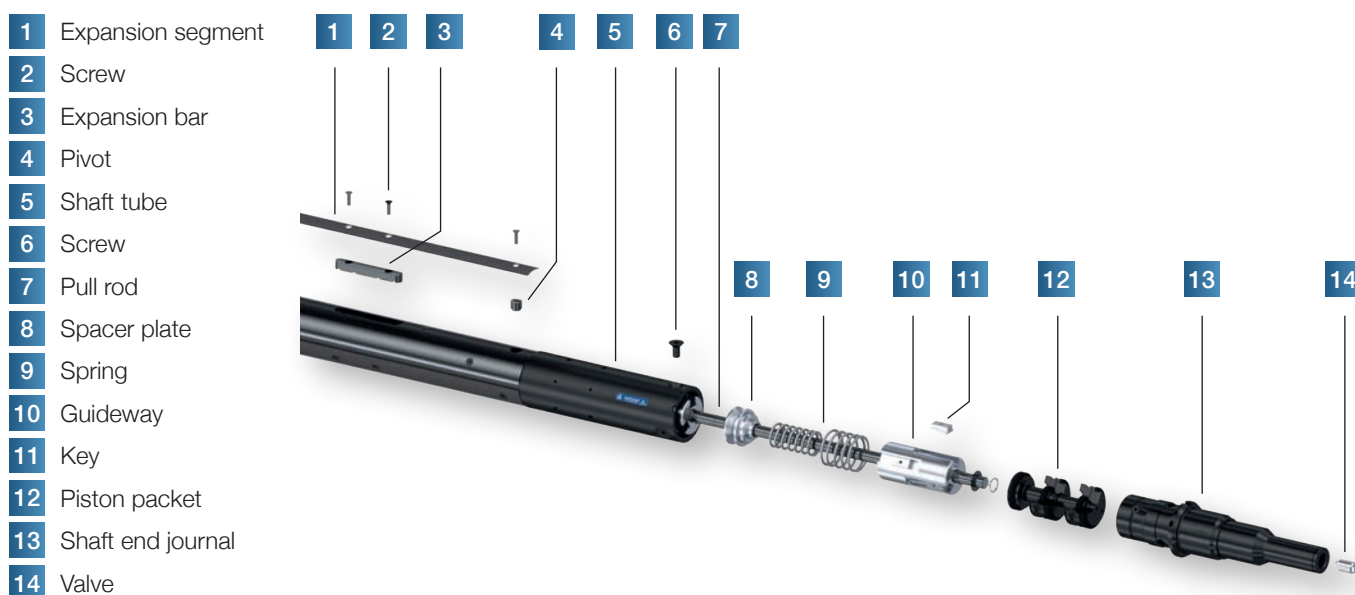
The performance characteristics of this expansion shaft include the high concentricity for high track velocities with sensitive materials, which is particularly suitable for multi-use or core-friendly applications.

Clamping by using spring force also guarantees the highest operational safety for this product, with permanent power transmission with centric clamping. The expansion segments, which can be manufactured either coated or uncoated, are expanded by supplying compressed air.

The SFA expansion shaft is based on the CTC expansion shaft in the mechanical model, made of high-tensile steel and can be balanced up to G2.5.



SFC Expansion shaft	70	3 inch	6 inch	on demand
Core inner ø mm	70	76.2	152.4	50-450



Expansion segments



Coated



uncoated



Sales partners worldwide

Switzerland, Liechtenstein, Italy and other countries worldwide

Schlumpf AG, Küssnacht am Rigi, Schweiz
www.schlumpf-ag.com

Germany - Austria - Hungary - Czech Republic - Slovakia

Block & Mohr GmbH, Ibbenbüren, Deutschland
www.block-mohr.com

United Kingdom

Arrowhive Equipment Ltd., Sonning Common Reading
www.arrowhive.co.uk

The Netherlands

Kluin Romak B.V., Epe, Niederlande
www.kluin-romak.nl

France, Maghreb states

Erhardt & Leimer France SARL, Mulhouse, Frankreich
www.erhardt-leimer.fr

Scandinavia

Schlumpf Scandinavia AB, Skarpnäck, Schweden
www.schlumpfs Scandinavia AB

Spain

Copapres, El Masnou, Spanien
www.copapres.com

Belgium, Luxembourg

AGEPA sprl., St. Vith, Belgien
www.agepa.com



Schlumpf AG

Aahusweg 8
6403 Küssnacht am Rigi
Switzerland

Schlumpf GmbH

Eichstetter Strasse 55c
79232 March
Germany

Phone +41 41 784 43 43

Fax +41 41 784 43 44

info@schlumpf-ag.com

www.schlumpf-ag.com